

# COLTENE

January - March 2025

## Promotions



NEWSLETTER



SIGN UP!



SPECIAL OFFER  
**BRILLIANT Lumina**  
P. 4



SPECIAL OFFER  
**HyFlex EDM OGSF**  
P. 12



SPECIAL OFFER  
**DIATECH Diamond Burs**  
P. 28

Universal submicron hybrid composite

# BRILLIANT EverGlow

## Enduring gloss – made brilliant



96%  
global mark  
obtained  
by publishers  
Dental

With the universal composite BRILLIANT EverGlow highly aesthetic and long-lasting restorations can be achieved effortlessly.

- Exceptional polishability and long-lasting brilliance
- Aesthetic single-shade restorations
- Versatile shade system with three translucency levels
- Good wettability with minimal stickiness to the instrument
- Excellent sculptability and smooth consistency



# BRILLIANT EverGlow Flow

The ideal complement

- Duo Shade system
- Ideal for cavity linings and small fillings
- Enduring gloss
- Good adaptation properties due to its low viscosity
- High stability and perfect thixotropic
- Absolute level of precision



### HIGHLY AESTHETIC RESULTS



Initial situation:  
discoloration



Opaque shade  
applied



Final  
restoration



### EverGlow Refills

1 x Syringe, 3g  
OR 20 x Tip, 0,2

	<b>Bleach Syringe</b> > 60019697 Tips > 60019706		<b>Translucent Syringe</b> > 60019704 Tips > 60019718
	<b>A1/B1 Syringe</b> > 60019698 Tips > 60019707		<b>Bleach Translucent Syringe</b> > 60019705 Tips > 60019719
	<b>A2/B2 Syringe</b> > 60019699 Tips > 60019708		<b>Opaque Bleach Syringe</b> > 60019743 Tips > 60019746
	<b>A3/D3 Syringe</b> > 60019700 Tips > 60019709		<b>Opaque A1 Syringe</b> > 60019744 Tips > 60019747
	<b>A3.5/B3 Syringe</b> > 60019701 Tips > 60019710		<b>Opaque A2 Syringe</b> > 60023819 Tips > 60023823
	<b>C2/C3 Syringe</b> > 60019702 Tips > 60019716		<b>Opaque A3 Syringe</b> > 60019745 Tips > 60019748
	<b>A4/C4 Syringe</b> > 60019703 Tips > 60019717		<b>Opaque A4 Syringe</b> > 60023820 Tips > 60023824

### EverGlow EcoPacks

<b>A1/B1, Tips EcoPack,</b>	60 x 0.2 g
60024160	
<b>A2/B2, Tips EcoPack,</b>	60 x 0.2 g
60024161	
<b>A3/D3, Tips EcoPack,</b>	60 x 0.2 g
60024162	
<b>A3.5/B3, Tips EcoPack,</b>	60 x 0.2 g
60024163	
<b>A1/B1, Syringes EcoPack,</b>	5 x 3 g
60024166	
<b>A2/B2, Syringes EcoPack,</b>	5 x 3 g
60024167	
<b>A3/D3, Syringes EcoPack,</b>	5 x 3 g
60024168	
<b>A3.5/B3, Syringes EcoPack,</b>	5 x 3 g
60024169	



LEARN MORE



### EverGlow Flow

1 x 2g Syringe,  
5 x Standard application needles  
5 x Fine application needles 0.4 mm

	<b>Bleach BL Syringe</b> > 60019752
	<b>A1/B1 Syringe</b> > 60019753
	<b>A2/B2 Syringe</b> > 60019754
	<b>A3/D3 Syringe</b> > 60019755
	<b>A3.5/B3 Syringe</b> > 60019756
	<b>A4/C4 Syringe</b> > 60019757
	<b>Translucent Trans Syringe</b> > 60019758
	<b>Opaque A2/(OA2) Syringe</b> > 60019751
	<b>Opaque A3/(OA3) Syringe</b> > 60023825

Professional Tooth Brightening System

# BRILLIANT Lumina

**NEW**

Natural bright smile

**H<sub>2</sub>O<sub>2</sub>**  
was yesterday!

**PAP**  
is the future of  
tooth brightening.

BRILLIANT Lumina offers you an innovative in-office solution for tooth brightening – the first formula without hydrogen peroxide and carbamide peroxide.

This is because BRILLIANT Lumina is based on the active ingredient PAP (phthalimidoperoxy caproic acid). What makes it so special: the unique formula enables the PAP concentration to be kept sufficiently high to achieve a naturally brighter smile during treatment.

No  
hydrogen  
peroxide



**OFFER**  
**3+1\***  
ON BASIC KITS

**BRILLIANT Lumina Basic Kit**  
REF 65002864  
4x Gel, 1x Activator, 1x Patient brochure

LEARN MORE



## BRILLIANT Lumina – an asset for your practice

Satisfied patients – no tooth sensitivity during or after treatment.

Gentle on the tooth structure – analyses of tooth surfaces show that BRILLIANT Lumina does not have an erosive effect on the tooth structure.

Simple treatment protocol

– the uncomplicated application of BRILLIANT Lumina can also be performed by dental practice staff.

### Convincing results

Well-documented patient cases and consistent results confirm the reliability of BRILLIANT Lumina. And patient satisfaction is also impressive.

Before and after images of tooth brightening with BRILLIANT Lumina



*The clinical outcomes depend on the individual circumstances of the patient.*



"I've never had tooth bleaching before because I was worried about unnaturally white teeth and pain sensitivity. However, the gentle method of BRILLIANT Lumina quickly convinced me. The natural brightening of my teeth is exactly what I was looking for – and all without pain during or after treatment."

**Andreas, 27 years**

Reinforced CAD/CAM composite for permanent restoration

# BRILLIANT Crios Block

BRILLIANT Crios is a high performance composite block for permanent restorations. The material combines all the advantages of an innovative submicron hybrid composite material with those of a CAD/CAM fabrication process for the reliable, aesthetic and fast manufacturing of restorations without a separate firing process.

- High flexural strength for resistant restorations
- Tooth-like elasticity for a shock-absorbing effect and pleasant bite experience
- Blends in extremely well to give natural aesthetics
- High resistance and low abrasion on opposite tooth
- Easy polishing for fast shine



CEREC/inLab – 5 blocks  
5 x Blocks (size 12 or 14)

	Low Translucent		High Translucent	
	5 x 12	5 x 14	5 x 12	5 x 14
<b>BLEACH</b>	<b>60019998</b> BL LT 12	<b>60019985</b> BL LT 14	-	-
<b>A1</b>	<b>60019999</b> A1 LT 12	<b>60019986</b> A1 LT 14	<b>60020007</b> A1 HT 12	<b>60019994</b> A1 HT 14
<b>A2</b>	<b>60020000</b> A2 LT 12	<b>60019987</b> A2 LT 14	<b>60020008</b> A2 HT 12	<b>60019995</b> A2 HT 14
<b>A3</b>	<b>60020001</b> A3 LT 12	<b>60019988</b> A3 LT 14	<b>60020009</b> A3 HT 12	<b>60019996</b> A3 HT 14
<b>A3.5</b>	<b>60020002</b> A3.5 LT 12	<b>60019989</b> A3.5 LT 14	-	-
<b>B1</b>	<b>60020003</b> B1 LT 12	<b>60019990</b> B1 LT 14	<b>60020010</b> B1 HT 12	<b>60019997</b> B1 HT 14
<b>B2</b>	<b>60020004</b> B2 LT 12	<b>60019991</b> B2 LT 14	-	-
<b>B3</b>	<b>60020005</b> B3 LT 12	<b>60019992</b> B3 LT 14	-	-

**Free Sample available**  
Ask your Territory Manager

# BRILLIANT Crios Disc

- Made from our award winning BRILLIANT EverGlow composite
- High surface lustre for smoother restorations
- Duo shades for economy in high or low translucencies

	Low Translucent		High Translucent	
	14mm	18mm	14mm	18mm
<b>A1</b>	<b>60022899</b> A1 LT H14	<b>60022886</b> A1 LT H18	<b>6002907</b> A1 HT H14	<b>60022894</b> A1 HT H18
<b>A2</b>	<b>60022900</b> A2 LT H14	<b>60022887</b> A2 LT H18	<b>60022908</b> A2 HT H14	<b>60022895</b> A2 HT H18
<b>A3</b>	<b>60022901</b> A3 LT H14	<b>60022888</b> A3 LT H18	<b>60022909</b> A3 HT H14	<b>60022896</b> A3 HT H18
<b>A3.5</b>	<b>60022902</b> A3.5 LT H14	<b>60022889</b> A3.5 LT H18	-	-



The disc is available in the two different heights 14 mm/18 mm and following shades and translucencies:

LEARN MORE



Light-Curing Single-Component Universal Bond

# ONE COAT 7 UNIVERSAL

The light-curing ONE COAT 7 UNIVERSAL is the only bond you need for direct and indirect filling therapy in your practice.

- Self Etch, Selective Etch and Total Etch, a bond for all adhesive techniques
- With activator for chemically curing products
- Exceptional bonding values on enamel and dentine
- Excellent marginal seal and outstanding marginal leakage tightness
- Ergonomically shaped, triangular bottle with dropper for fine dosing

Contains MDP

- One bond for all indications



**300**  
Applications  
per bottle



**ONE COAT 7  
UNIVERSAL Refill**  
REF 60019539



**UNIVERSAL ACTIVATOR 3 ml**  
for self and dual cure materials  
REF 7054  
1 × 3 ml Activator,  
1 × 50 pcs. Microblush, black

## ONE COAT 7 UNIVERSAL Intro Kit

REF 60019538

- 1 × 5 ml ONE COAT 7 UNIVERSAL
- 1 × 2.5 ml Etchant Gel S
- 1 × 20 pcs. Application needles
- 1 × 50 pcs. Brushes black
- 1 × Mixing well with cover



LEARN MORE



RESTORATION

Flowable dual curing posterior restorative material

# Fill-Up!

A SERIOUS ALTERNATIVE TO AMALGAM

- Optimal depth polymerisation with minimal shrinkage due to dual curing system.
- Guaranteed single-layer technique - even in very deep cavities.
- Optimised sealing of margins - reduced post-operative sensitivity
- Universal shade in a convenient Automix syringe for efficient placement.



**“** Given the move towards less amalgam use there is going to be greater need for suitable alternative materials and composite resin will lead the way. There are likely to be increased use of novel techniques including bulk-fill restorative materials. Fill-Up is one such material that allows rapid cavity filling, easy finishing and a reasonable wear resistance with simple top-up and repair options for long-term maintenance **”**

**Professor Brian Millar**



### Fill-Up! Kit

REF 60019973

Contents: 2 x 4.5 g Fill-Up! Universal,  
1 x 5 ml ONE COAT 7 UNIVERSAL,  
1 x 3 ml ONE COAT 7-UNIVERSAL Activator  
6 x Mixing tips Short Super Fine,  
8 x Mixing tips Short Fine



**OFFER**

Buy any kit  
**GET A FREE  
COMPOSITE  
INSTRUMENT  
SET**



**UK SPECIAL PROMOTION**  
Copy invoice required.  
Send to [info.uk@coltene.com](mailto:info.uk@coltene.com)

### Fill-Up! Refill Syringe

REF 60019341

1 x 4.5 g Fill-Up! Universal,  
6 x Mixing tips

### Fill-Up! Economy Kit

REF 60019355

5 x 4.5 g Fill-Up! Universal,  
20 x Mixing Tip short fine  
15 x Mixing Tip short super fine



LEARN MORE





# Mastering Anterior and Posterior Composites - hands on course

With Dr Asmaa Al-Taie

**Saturday 14th June 2025**

## Clayton Hotel, Leeds

7 City Walk, Sweet Street, Leeds LS11 9AT  
(10 minutes' walk from train station)

Tel: 01132 342 340

Email: [Cb.leeds@claytonhotels.com](mailto:Cb.leeds@claytonhotels.com)

**A hands on clinical course, which explores the aesthetic clinical management of the anterior dentition with direct resin composites.**

**Learn how to assess patients to optimise treatment success and enhance the functional and aesthetic outcome using modern, restorative techniques. Benefit from hands on practical work, building up anterior teeth and optimising aesthetics by layering.**

**The course also includes demonstrations of how to use flowable bulk fill composites and a simplified method of cusp build ups, improving your technique and confidence in practice.**

### Objectives:

1. Discuss clinical assessment of the anterior teeth and planning management strategies.
2. Review the development of resin composites and modern bonding protocols and polishing systems.
3. To demonstrate how to produce successful composite build ups to optimise the shape and aesthetics of anterior teeth.
4. Discuss finishing and polishing techniques of composite restorations.
5. To demonstrate how to produce posterior composites using flowable Bulkfil composites and using simplified method of cusps build ups to produce the correct anatomy.

### Learning Outcomes:

1. Be able to plan and undertake composite bonding to optimise the size and shape of anterior teeth and optimise aesthetic outcomes.
2. Be able to produce successful composite anterior composite build ups to optimise the shape and aesthetics of anterior teeth.
3. Be able to produce posterior composites restorations using Bulkfil composites.

### GDC outcomes: C

**Cost:** £295 including vat  
(Maximum 12 delegates)

**Book online:**



# CanalPro X-Move

Includes integrated Apex Locator

Already programmed for the new OGSF sequence file

- Continuous rotation and a reciprocation motion for all common file systems
- Wireless endomotor for easy and flexible operation
- Integrated apex locator for safe and efficient treatments
- Insulated contra angle with super mini-head and slim neck provides convenient usage and free field of view
- Intuitive control display for easy handling
- Pre-programmed settings for COLTENE file systems saves preparation time

**OFFER**

BUY AN X-MOVE MOTOR AND GET

**8 PACKS OF EDM OGSF FILES FREE!\***

Promo code: BUNDLEXM

FILE PACKS INCLUDE:  
 4 × OGSF Sequence Sets 25mm and 1 × of each Orifice Opener 18mm, Glidepath File 25mm, Shaping File 25mm, Finishing File 25mm

See pages 12-13 for more EDM OGSF information.



CanalPro X-Move contra angle super mini-head & slim neck



Normal contra angle head & neck

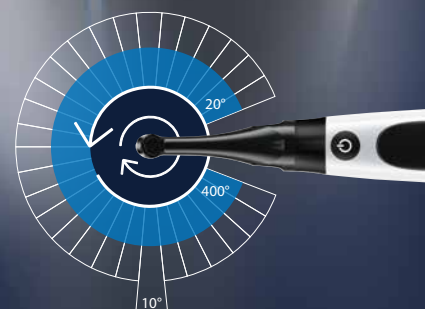
## CanalPro X-Move Motor

REF 65002739

Contents:  
 1 × Motor Handpiece, 1 × Charging Base, 1 × Contra Angle Head (REF 65002744)  
 1 × Spray Nozzle, 1 × Measuring Wire, 4 × File Holder, 2 × Lip Clip,  
 2 × Touch Probe, 2 × "O" ring, 1 × Power Adapter, 1 × Battery

Ask your Territory Manager for a demonstration

LEARN MORE



DISCOVER THE ENDO ASSISTANT JENI!

# CanalPro Jeni

Digital assistance system for canal preparation



## CanalPro Jeni, complete set

REF 60023659

includes:

- 1 × Control unit,
- 1 × Motor with apex measuring contact,
- 1 × Fully insulated angled handpiece 1:1,
- 1 × Bluetooth foot switch,
- 1 × Power supply,
- 1 × Apex cable set,
- 1 × Holding bracket for apex cable



New, autonomous assistance system for canal preparation



Perfectly matched to four file systems



Apex locator – measuring length without interruption



Reach your objective efficiently with the Jeni mode



Irrigation with aplomb



Flexible use via Doctor's Choice function



File-Performance Indicator



Future-proof with updates



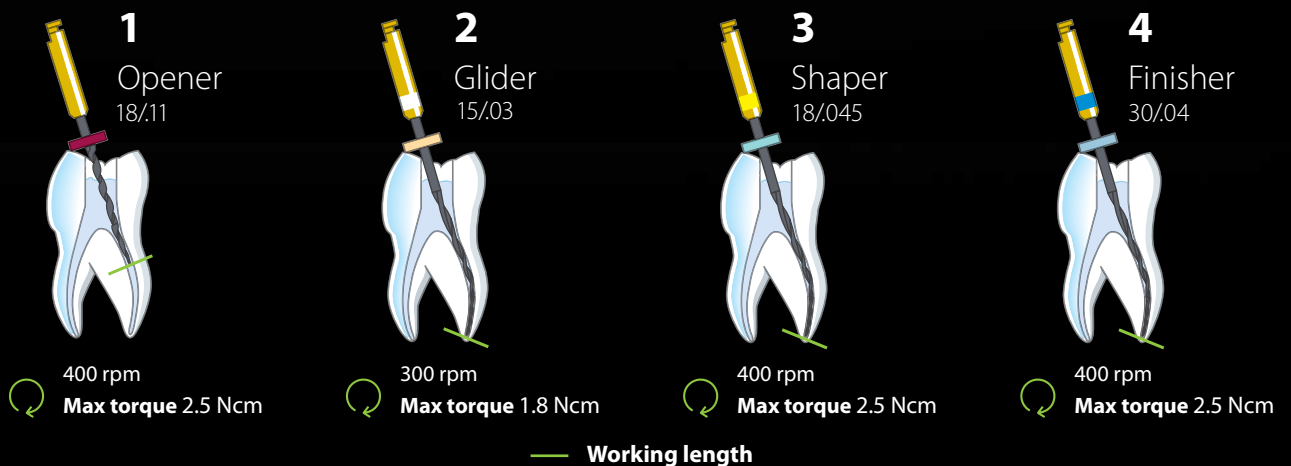
LEARN MORE





**NEW**

# HyFlex EDM – OGSF Sequence





## Would you like fast, safe and predictable? Discover the new sequence solution!

The new HyFlex EDM OGSF sequence includes a new Orifice Opener and Glidepath file for opening the glide path, as well as a Shaping file for shaping the root canal over the full length. The defined treatment procedure makes the preparation easy and keeps the learning curve short. Due to the optimized match of tip sizes and tapers, designed in cooperation with Prof. Pedullà, the files provide a smooth feeling when shifting from one file to another and help you to keep control over the treatment.

### Features and Benefits

- Efficient treatment with high cutting performance
- High fracture resistance and flexibility
- Centered preparation of the canal
- Only one shaping file
- Sterile blister
- 2 lengths: 21 and 25 mm

### Shaping

HyFlex EDM OGSF Set, 4 pcs	21 mm	25 mm
OGSF Sequence	60036141	60036142
HyFlex EDM OGSF Refills, 3 pcs	18 mm	21 mm
Orifice Opener 18/.11	60036140	-
Glidepath File 15/.03	-	60023493
Shaping File 18/.045	-	60036136
Finishing File 30/.04	-	60036138
HyFlex EDM Finishing File, 3 pcs	21 mm	25 mm
Finishing File 40/.04	60022271	60019597
Finishing File 50/.03	60022272	60019598
Finishing File 60/.02	60022274	60019599

### Drying and Obturation

Size / Taper	HyFlex EDM Paper Points, 100 pcs	HyFlex EDM Guttapercha Points, 60 pcs
30/.04	60036503	60036504
40/.04	60022676	60022708
50/.03	60022741	60022709
60/.02	60022740	60022710



LEARN MORE



# HyFlex EDM

## Stays on track

Manufactured from Nickel-Titanium alloy with Controlled Memory (CM) heat treatment, HyFlex EDM files allow multiple regeneration and reuse. Due to their innovative manufacturing process using electric discharge machining HyFlex EDM files have a unique surface and stand out by their durability and high fracture resistance.

- Treats 80% of all cases with the one file
- Designed for successful centered canal preparation
- Multiple regeneration and reuse
- Specially hardened for safer application
- High flexibility
- Extreme resistance to fracture



**OFFER**

**3+1\***  
ON REFILLS

**HyFlex EDM Refill**  
3 × File of your choice

**Orifice Opener**  
25/.12



**Glidepath File**

15/.03



10/.05



Length	Refill × 3 400 rpm - 2.5 N.cm	Refill × 3 300 rpm - 1.8 N.cm	Refill × 3 300 rpm - 1.8 N.cm
21mm	-	60023493	60022269
25mm	-	60023492	60019594
15mm	60019596	-	-

LEARN MORE



### HyFlex EDM Shaping Set Simple

- 1 × 25/12 Orifice Opener
- 1 × 10/05 Glidepath File
- 1 × 25/~ Shaping File

Length

21mm	60022267
25mm	60019363



### HyFlex EDM Shaping Set Medium

- 1 × 10/05 Glidepath File
- 1 × 20/05 Preparation File
- 1 × 25/~ Shaping File

Length

21mm	60022277
25mm	60022278



### HyFlex EDM Refills for finishing (optional)

3 × File of your choice

	21mm	25mm
40/04	60022271	60019597
50/03	60022272	60019598
60/02	60022274	60019599



#### Preparation File

20/05



#### Shaping File

25/~ OneFile



#### Refill × 3

400 rpm - 2.5 N.cm

60022275

60022276

#### Refill × 3

400 rpm - 2.5 N.cm

60022270

60019595

# CanalPro

Irrigation and rinsing



**OFFER**

**25%**  
OFF RRP\*  
500ml RINSING  
SOLUTIONS

For irrigation/debridement of root canals during and after instrumentation. Available in 3% and 6% formula.

**CanalPro NaOCl 3 %**  
1 × 500ml  
REF 60019655V

**CanalPro NaOCl 6 %**  
1 × 500ml  
REF 60019656V

Removes smear layer and dentin mud. Opens dentin tubules. Better adhesion of sealers and obturation materials.

**CanalPro EDTA 17 %**  
1 × 500ml  
REF 60019651

**CanalPro EDTA 17 %**  
1 × 100ml  
REF 60019654

Chlorhexidine digluconate solution. Recommended for additional rinsing and during revisions. Very effective against *E. faecalis* and fungi.

**CanalPro CHX 2 %**  
1 × 500ml  
REF 60019658

**CanalPro CHX 2 %**  
1 × 100ml  
REF 60019659



### CanalPro SyringeFill Cap

REF 60019662

1 × SyringeFill Cap



### CanalPro Color Syringes

50 × Color Syringes 5ml

50 × Color Syringes 10 ml

	5ml	10ml
●	REF 60019321	REF 60011173
●	REF 60019322	REF 60011174
●	REF 60019323	REF 60011175
○	REF 60019324	REF 60011176

### CanalPro Slotted-end Tip

REF 60011167

100 × Slotted-end tips with sideway opening

Calibre 27 - 0.4mm

REF 60011168

100 × Slotted-end tips with sideway opening

Calibre 30 - 0.3mm



### CanalPro Side-Port Tips

REF 60011169

100 × Side-Port tips

Calibre 27 - 0.4mm

REF 60011170

100 × Side-Port tips

Calibre 30 - 0.3mm



Expansion meets adhesion

# roeko GuttaFlow 2

GuttaFlow 2 is a filling system for obturation of root canals containing two products in one: Guttapercha in the form of powder with a particle size smaller than 30 µm and a sealer. This filling system works with cold, flowable Guttapercha.

- Excellent flow properties
- Almost no solubility
- Dense occlusion of the root canal
- Very good tissue compatibility
- Reinfection protection
- Optimal radiopacity
- Precise root post preparation possible



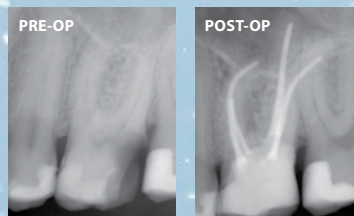
Excludes mixing tips packs

Bioactive obturation material

# roeko GuttaFlow bioseal

Dual safety stage

- Gutta Percha and sealer in a single application
- Nearly insoluble
- The healing process is supported by increasing the pH value



Images - Dr. Thomas Rieger



### GuttaFlow 2 Standard set 5ml syringe

1 × Dual-barrel syringe,  
12 × Mixing tips,  
1 × Mixing pads  
REF 60026870

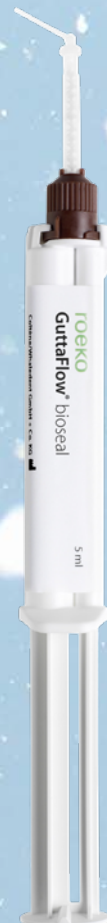
### GuttaFlow 2 Refill pack 5ml syringe

REF 60026871

### GuttaFlow 2 Refill pack 24 mixing tips

REF 60013719

LEARN MORE



### GuttaFlow bioseal Standard Set 5ml syringe

1 × Dual-barrel syringe,  
12 × Mixing tips,  
1 × Mixing pads  
REF 60019560

### GuttaFlow bioseal Refill pack 5ml syringe

REF 60019561

### GuttaFlow bioseal Refill pack 24 mixing tips

REF 60019562

# Paper and Guttapercha Points

## HyFlex EDM Paper Points and Guttapercha Points

HyFlex paper and guttapercha points are optimally matched to the HyFlex EDM files and thus contribute to the best possible treatment result. They correspond to the respective sizes and have the perfect taper to dry and obturate root canals previously prepared with HyFlex files precisely and as quickly as possible.

- Precise fit
- Colour-coded
- Highest quality
- assorted or individual sizes
- ≥ 28 mm



### HyFlex EDM & OGSF Paper and Guttapercha points selection

Size / taper	Paper points 100 pcs	Guttapercha points 60 pcs
20 / .05	REF 60022742	REF 60022706
OneFile 25/~	REF 60022743	REF 60022707
40 / .04	REF 60022676	REF 60022708
50 / .03	REF 60022741	REF 60022709
60 / .02	REF 60022740	REF 60022710
Assortment 20/.05 - 60/.02	REF 60022744	REF 60022705
OGSF 30/.04	REF 60036503	REF 60036504



## Roeko Paper Points and Guttapercha Points, Top color



- Sterile
- Glue-free
- Highly absorbent
- White tip, end coloured
- Monitors cleaning and drying of the root canal

### Roeko Top Color Paper points

Size	200 pcs
Assorted 15–40	REF 344596
15	REF 344515
20	REF 344520
25	REF 344525
30	REF 344530
35	REF 344535
40	REF 344540
Size	120 pcs
Assorted 45–80	REF 344597
45	REF 344545
50	REF 344550
55	REF 344555
60	REF 344560
70	REF 344570
80	REF 344580
Assorted 90–140	REF 344598
90	REF 344590
100	REF 344591
110	REF 344592
120	REF 344593
130	REF 344594
140	REF 344595



- Latex-free guttapercha points
- Pink tip, end colour coded
- Produced fully automatically
- Precisely produced by machine rolling for a uniform taper

### Roeko Top Color Guttapercha points

Size	100 pcs
Assorted 15–40	REF 365196
15	REF 365115
20	REF 365120
25	REF 365125
30	REF 365130
35	REF 365135
40	REF 365140
Assorted 45–80	REF 365197
45	REF 365145
50	REF 365150
55	REF 365155
60	REF 365160
70	REF 365170
80	REF 365180
Assorted 90–140	REF 365198
90	REF 365190
100	REF 365191
110	REF 365192
120	REF 365193
130	REF 365194
140	REF 365195

# A-silicone impression material

## AFFINIS



Still one of the fastest A-silicones



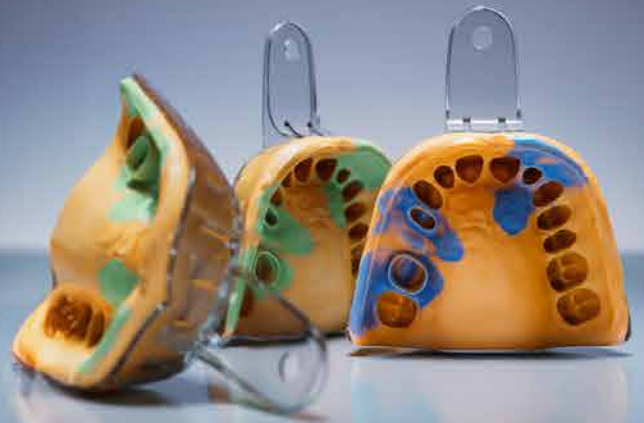
Precise moulding of every detail even under the most difficult conditions



Confidence during impression taking



Easy monitoring for success



**OFFER**

**2+1**

ON REFILLS

TERRITORY MANAGER OFFER  
FEBRUARY ONLY



### AFFINIS putty

2 x 300ml Base and Catalyst  
2 x Dosage spoon

#### Viscosity

putty soft		6530
putty soft fast		6531
putty super soft		6535



### AFFINIS system 360

2 x 380ml Cartridge  
1 x Fixation Ring

#### Viscosity

putty		6472
heavy body		6487
MonoBody		6482

**FOR THE FULL RANGE**  
PLEASE ASK YOUR TERRITORY MANAGER



### AFFINIS and AFFINIS PRECIOUS

2 x 50ml Cartridge  
12 x Universal Mixing Tip

#### Viscosity

light		6501
light fast		6601
regular		6511
regular fast		6611
PRECIOUS light		6775
PRECIOUS regular		6776

LEARN MORE



# Speedex

The C-silicone with A-silicone quality

- One for all: the Speedex Universal Activator for all wash and tray materials
- Speedex putty soft material impresses with outstanding final hardness
- You can customise the working time by increasing or reducing the amount of activator paste

OFFER

**3+1\***

ON REFILLS



REF 4970	Putty
REF 60023572	Putty Soft
REF 4980	Light Body
REF 4986	Medium
REF 4990	Universal Activator

LEARN MORE

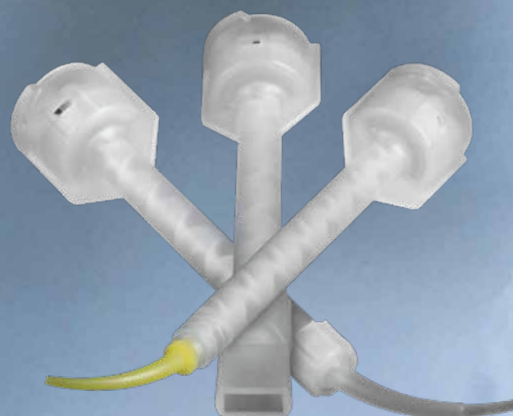


## Universal Mixing Tip

One for all, all for one!

Universal Mixing Tip – Always the right choice

- For all 50 ml and 25 ml microSystem cartridges from COLTENE
- All common oral and spreader tips of 50 ml and 25 ml cartridges can be used
- Simple and precise application due to reduced extrusion forces
- Practical, flexible and economical
- For all COLTENE light and regular body, bite registration and gingival mask materials



With up to 55 % less extrusion force during the application of wash material the new Universal Mixing Tip ensures an easier work with dispensers.

See over for range of tips and use

# Range of Tips



Oral Tips Yellow



Oral Tips White



60019663

60019694

6555

6210

× 40

× 100

× 100

× 100

**PRESIDENT The Original 50ml**

Light body, Regular body, Xtra light body



**AFFINIS and AFFINIS PRECIOUS 50ml**

Light body, Light body fast, Regular body, Regular body fast



**PRESIDENT The Original**

System 360, Heavy body, MonoBody

**AFFINIS SYSTEM 360**

MonoBody, Heavy Body, Putty

**JET BLUE BITE 50ml**

Fast, Superfast



**ParaCore 25ml**

Automix dentin, Automix white



**ParaCore 5ml**

Automix intro kit, Automix dentin, Automix white, Refill

**Fill-Up! 4.5g**

Intro kit, Refill

**TempoSIL 2 - 5ml**

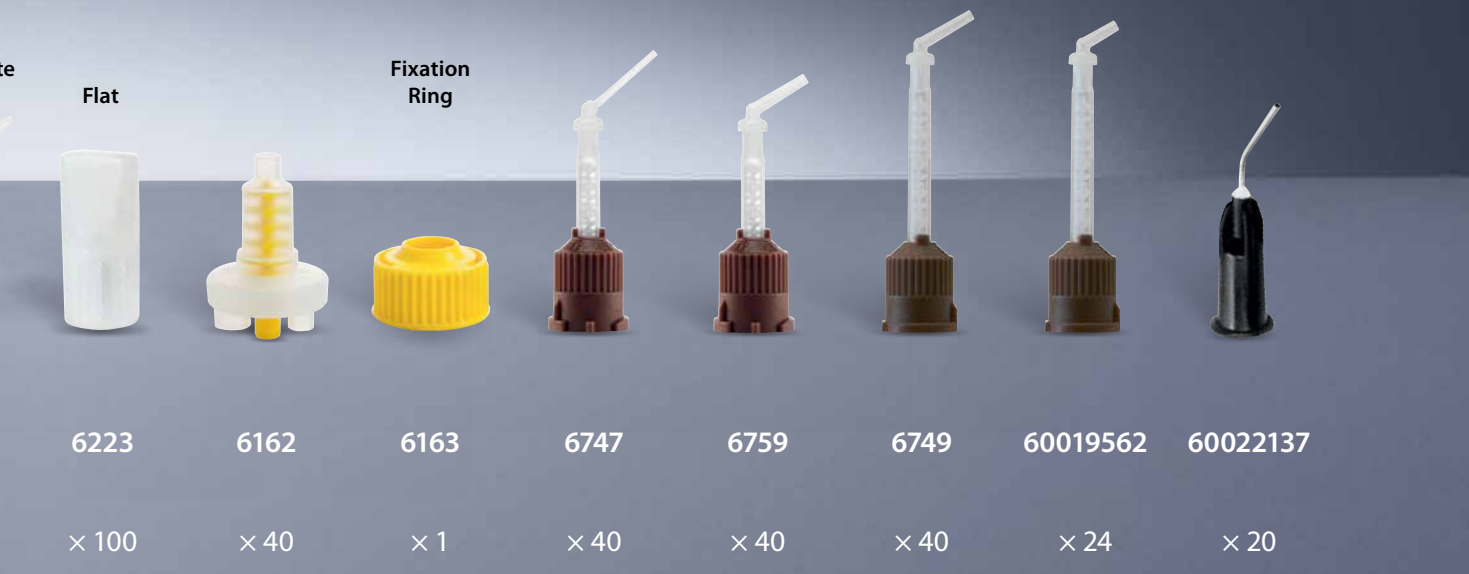
Dentin intro kit, Dentin refill, White intro kit, White Refill

**GuttaFlow bioseal 5ml**

Kit, Refill

**BRILLIANT EverGlow Flow**

Kit, Refill



	6223	6162	6163	6747	6759	6749	60019562	60022137
× 100	✓							
× 40		✓						
× 1			✓					
× 40				✓	✓	✓		
× 40				✓	✓	✓		
× 40				✓	✓	✓		
× 24							✓	
× 20								✓

# roeko Headrest Covers

The use of ROEKO headrest covers is a simple, quick and hygienic way of preparing the patient chair for the next patient. Polyethylene foil with absorbent cellulose coating.



- REF 670007 White, 100 pcs. 27 × 28cm
- REF 670008 White, 100 pcs. 27 × 31cm
- REF 670009 White, 100 pcs. 27 × 34cm

# roeko Luna



**ROEKO Luna**  
Cotton rolls

- REF 100001 300g, #1
- REF 100002 300g, #2
- REF 100003 300g, #3
- REF 100004 300g, #4





# roeko Endo-Frost

- Produces a rapid response
- Needs no refrigeration
- Spray nozzle for precise application
- Neat - no dripping



**ROEKO Endo-Frost**  
REF 240000  
Cold Spray, 200ml

SciCan

# HYDRIM C61 WD G4



Automated Instrument Washer-Disinfectors are the first step in the reprocessing process

The HYDRIM C61 WD from Eschmann and COLTENE ensures instruments are properly and consistently cleaned and disinfected before moving onto sterilisation in an autoclave.

**Features include:**

- Accommodates 120 instruments per cycle
- Heavy duty cleaning, disinfection & drying in 60 minutes
- Validated cycles and compliant to HTM01-05/SDCEP

- WRAS approved
- Benchtop or underbench mounting meaning it can fit into practices where space is at a premium

**Service & Support**

In addition, Eschmann offer a fully comprehensive service package to support your HYDRIM C61 WD. This includes ECPD training, annual service & software upgrades, unlimited parts, labour & breakdown cover from our nationwide team of over 50 engineers.

WATCH THE VIDEO



Available from:  
 Eschmann Technologies Ltd.  
 Tel. 01903 753322  
 Email - info@eschmann.co.uk  
 www.eschmann.co.uk

Ultrasonic cleaning supports safe instrument reprocessing!

# BioSonic UC150

- 5.7l stainless steel tank
- Low noise during operation
- Data log function and download of usage data via USB
- Individually adjustable functions
- Offers space for several cassettes at the same time
- Use as tabletop or built-in unit
- Heating function from 25 up to 60 °C (Function can be activated separately via code)
- Glove-friendly touch screen



LEARN MORE



## BioSonic UC150 Cleaner Unit UK Plug type G

REF 60021989

- 1 x Unit with display
- 1 x Recess Template
- 1 x Basket
- 1 x Recess Gasket
- 1 x Power Cord [UK]
- 1 x Drain Tube

### Accessories

- REF UC53 1 x 600 ml Beaker with Cover & Positioning Ring
- REF 60022040 1 x Cassette Basket 26.8 x 15.8 x 11.5 cm
- REF 60022041 1 x Beaker Holder

### Ultrasonic Solutions

- REF 60021960 1 x BioSonic UC40 dosed bottle, 1 l
- REF 60021961 1 x BioSonic UC40 refill can, 5 l

# BioSonic UC50DB

## BioSonic UC50DB Cleaner Unit UK Plug

REF UC50DB230UK

- With Digital Timer
- Tank capacity 3.2 l
- 1 x Tank cover
- 1 x Fingerguard instrument basket
- 1 x Owners guide



LEARN MORE



NOW IN NEW BLISTER PACKS

DIATECH

# Diamond Burs



DIATECH Diamonds now come in individually sealed and marked blister packs for traceability and convenience.

- Gold-plated premium instruments
- Higher number of diamonds per mm<sup>2</sup>
- 100% natural diamond grit
- 100% visual quality control
- ISO standardized grit sizes
- Precise blank calibration

LEARN MORE



**\*Large Size**

Content: 50 instruments  
10 × 5 blister packed burs  
Available for selected products

**Regular Size**

Content: 5 instruments  
Packed in 5 single sealed blister trays  
Available for all products



## Order Information

Head shape

Head shape number  
Head diameter in 1/10 mm  
Head length in mm

Grit sizes:

C	107–181 μm*
M	64–126 μm*
F	27–76 μm*
EF	10–36 μm*

\* Grit sizes according to ISO 7711-3

Head shape				Round End Taper			
Price Gr.	Price Gr.	Price Gr.	Price Gr.	D1/005D	D1/005D	D1/005D	D1/005D
C	M	F	EF	60032312	60032318	60032316	60032314
						Y	Z



Illustration

Y: This item is also available with friction grip short shank (FGSS)

Z: This item is also available in packaging units of 50 pieces.

For article numbers see table below.

Price Group



# DIATECH Diamond Bur Range (cont.)

Round	801 12 1.2	D1/005D 60031856 Z	Round	801 14 1.4	D1/005D 60031862 Z	Round	801 16 1.6	D1/005D 60031867 Z	Round	801 18 1.8	D1/005D 60031875 Z	Round	801 20 2	D1/005D 60031880	Round	801 23 2.3	D1/005D 60031882	Round	801 27 2.7	D1/005D 60031889 Z	Round	801 29 2.9	D1/005D 60031886	Round	801 29 2.9	D1/005D 60031884	Round	802 12 1.2	D6/005D 60031906	Round with Collar	802 14 1.4	D6/005D 60031870	Round with Collar	802 16 1.6	D6/005D 60031908	Round with Collar	802 16 1.6	D6/005D 60031910	Inverted Cone	805 12 0.9	D6/005D 60031912	Inverted Cone	805 14 1.4	D6/005D 60031914	Inverted Cone	805 16 1.6	D6/005D 60031916									
Flat End Cylinder	835 8 3	D1/005D 60032002	Flat End Cylinder	835 10 4	D1/005D 60032005 VIZ	Flat End Cylinder	835 12 4	D1/005D 60032008	Flat End Cylinder	835 14 4	D1/005D 60032010	Flat End Cylinder	835 16 4	D1/005D 60032012	Flat End Cylinder	836 12 6	D1/005D 60032028	Flat End Cylinder	836 14 6	D6/005D 60032032	Flat End Cylinder	837 12 7	D1/005D 60032050	Flat End Cylinder	837 12 8	D1/005D 60032052	Flat End Cylinder	837 14 8	D1/005D 60032054	Flat End Cylinder	837 16 8	D6/005D 60032056	Flat End Cylinder	837 16 8	D1/005D 60032058	Round End Cylinder	838 9 3	D1/005D 60032074	Round End Cylinder	838 10 4	D1/005D 60032076	Round End Cylinder	838 12 4	D1/005D 60032078												
Round End Taper	850 16 10	D6/005D 60032206	Round End Taper	850 16 8	D1/005D 60032210 Z	Round End Taper	850 18 10	D6/005D 60032218	Round End Taper	850 20 10	D1/005D 60032222	Round End Taper with Safe End	851 18 8	D1/005D 60032246	Round End Taper with Safe End	851 18 8	D1/005D 60032248	Needle	852 12 6	D6/005D 60032254	Needle	852 16 6	D6/005D 60032252	Needle	852 16 6	D6/005D 60032250	Needle	853 10 3.5	D6/005D 60032264	Round End Taper	855 12 6	D1/005D 60032268	Round End Taper	855 14 6	D1/005D 60032270	Round End Taper	855 14 6	D1/005D 60032272	Round End Taper	856 14 8	D1/005D 60032280	Round End Taper	856 14 8	D6/005D 60032278	Round End Taper	856 14 8	D1/005D 60032284	Round End Taper	856 14 8	D1/005D 60032282						
Flame	863 16 10	D1/005D 60032480	Flame	864 14 12	D1/005D 60032478	Torpedo	877 10 6	D1/005D 60032476	Torpedo	877 12 6	D6/005D 60032488	Torpedo	877 12 6	D6/005D 60032490	Torpedo	878 10 8	D1/005D 60032504	Torpedo	878 12 8	D1/005D 60032502	Torpedo	878 14 8	D1/005D 60032510	Torpedo	878 16 8	D1/005D 60032512	Torpedo	879 12 10	D1/005D 60032554	Torpedo	879 14 10	D1/005D 60032552	Torpedo	879 16 10	D6/005D 60032556	Torpedo	879 16 10	D1/005D 60032560	Torpedo	879 16 10	D1/005D 60032558	Round End Cylinder	880 12 6	D1/005D 60032562	Round End Cylinder	880 14 6	D1/005D 60032590	Round End Cylinder	880 14 6	D1/005D 60032588	Round End Cylinder	881 10 8	D1/005D 60032596	Round End Cylinder	881 10 8	D6/005D 60032594
Pearl Long	830L 20 5	D1/005D 60031994	Rounded Edge Cylinder	835R 8 3	D6/005D 60032016	Rounded Edge Cylinder	835R 10 4	D1/005D 60032018 V	Rounded Edge Cylinder	835R 12 4	D1/005D 60032022	Rounded Edge Cylinder	835R 14 4	D6/005D 60032020	Rounded Edge Cylinder	835R 16 6	D1/005D 60032034	Rounded Edge Cylinder	836R 10 6	D1/005D 60032038	Rounded Edge Cylinder	836R 12 6	D1/005D 60032036	Rounded Edge Cylinder	836R 14 6	D1/005D 60032040	Rounded Edge Cylinder	836R 14 6	D1/005D 60032044	Rounded Edge Cylinder	837R 12 8	D1/005D 60032062	Rounded Edge Cylinder	837R 14 8	D1/005D 60032060	Rounded Edge Cylinder	837R 14 8	D1/005D 60032066	Rounded Edge Taper	845R 16 4	D6/005D 60032068	Rounded Edge Taper	845R 16 4	D1/005D 60032106	Rounded Edge Taper	845R 25 4	D1/005D 60032110	Rounded Edge Taper	845R 25 4	D1/005D 60032108						
Tapered Torpedo /Curette	878K 21 8	D6/005D 60032538	Tapered Torpedo with Pin	878KP 18 8	D6/005D 60032544	Tapered Torpedo With Pin	878KT 21 8	D3/005D 60032542	Tapered Torpedo /Curette	879K 12 10	D3/005D 60032548	Tapered Torpedo /Curette	879KT 14 10	D3/005D 60032546	Tapered Torpedo /Curette	879KT 16 10	D6/005D 60032564	Tapered Torpedo /Curette	879K 18 10	D6/005D 60032570	Tapered Torpedo /Curette	879K 21 10	D6/005D 60032576	Tapered Torpedo /Curette	879K 23 10	D6/005D 60032580	Tapered Torpedo /Curette	879K 23 10	D6/005D 60032582	Round	801M 9 0.9	D2/005D 60031898	Round End Cylinder	838M 7 2.5	D2/005D 60032082	Flame	889M 7 2.5	D2/005D 60032662	ET3	8 3	D2/005D 60032711	ET4	8 4	D2/005D 60032712												
Round End Taper	856T 18 8	D3/005D 60032370	Round End Taper	856T 21 9	D3/005D 60032372	Round End Taper	856T 25 7	D3/005D 60032374	Tapered Torpedo /Curette	878KT 16 8	D3/005D 60032550	Tapered Torpedo /Curette	879KT 14 10	D3/005D 60032584	Tapered Torpedo /Curette	879KT 18 10	D3/005D 60032586	Round End Cylinder	881T 14 8	D3/005D 60032616	Round End Cylinder	881T 16 8	D3/005D 60032618	Round End Cylinder	882T 14 10	D3/005D 60032630	Egg /Football	379Z 23 5	D5/005D 60031814	Round	801Z 12 1.2	D5/005D 60031900	Round	801Z 14 1.4	D5/005D 60031902	Round	801Z 18 1.8	D5/005D 60031904	Round End Taper	850Z 16 10	D5/005D 60032242															



	<b>Inverted Cone with Collar</b>		806 10 2.2	D6/005D 60031918
	<b>Inverted Cone with Collar</b>		806 12 2.2	D6/005D 60031920
	<b>Inverted Cone with Collar</b>		806 14 2.2	D6/005D 60031922
	<b>Inverted Cone with Collar</b>		806 16 2.5	D6/005D 60031924
	<b>Inverted Cone</b>		807 10 3.5	D6/005D 60031926
	<b>Inverted Cone</b>		807 12 3.5	D6/005D 60031928
	<b>Inverted Cone</b>		807 16 4	D6/005D 60031930
	<b>Inverted Cone</b>		807 18 5	D6/005D 60031932
	<b>Occlusal Reduction/Barrel</b>		811 31 4.2	D4/005D 60031934
	<b>Occlusal Reduction/Barrel</b>		811 33 5	D4/005D 60031936
	<b>Occlusal Reduction/Barrel</b>		811 37 7	D4/005D 60031940
	<b>Occlusal Reduction/Barrel</b>		811 48 8	D4/005D 60031942
	<b>Occlusal Reduction/Barrel</b>		811 48 8	D4/005D 60031944
	<b>Diabolo/Amalgam Remover</b>		810 1.5	D6/005D 60031948
	<b>Diabolo/Amalgam Remover</b>		813 14 1.5	D6/005D 60031950
	<b>Round End Cylinder</b>		838 14 4	D1/005D 60032080
	<b>End Cutting Cylinder</b>		839 10 0.2	D2/005D 60032084
	<b>End Cutting Cylinder</b>		839 12 0.2	D2/005D 60032088
	<b>End Cutting Cylinder</b>		839 14 0.2	D2/005D 60032086
	<b>End Cutting Cylinder</b>		839 16 0.2	D2/005D 60032092
	<b>End Cutting Cylinder</b>		839 18 0.2	D2/005D 60032090
	<b>Flat End Cylinder</b>		842 14 12	D1/005D 60032094
	<b>Flat End Taper</b>		845 10 4	D6/005D 60032096
	<b>Flat End Taper</b>		845 12 4	D6/005D 60032098
	<b>Flat End Taper</b>		845 14 4	D6/005D 60032100
	<b>Flat End Taper</b>		845 16 4	D6/005D 60032104
	<b>Flat End Taper</b>		845 21 4	D6/005D 60032102
	<b>Flat End Taper</b>		846 16 6	D1/005D 60032112
	<b>Flat End Taper</b>		846 12 7	D1/005D 60032114
	<b>Flat End Taper</b>		846 18 7	D1/005D 60032116
	<b>Flat End Taper</b>		846 23 7	D6/005D 60032118
	<b>Flat End Taper</b>		847 12 8	D1/005D 60032126
	<b>Round End Taper</b>		856 14 9	D1/005D 60032286
	<b>Round End Taper</b>		856 16 9	D6/005D 60032288
	<b>Round End Taper</b>		856 18 9	D1/005D 60032292
	<b>Round End Taper</b>		856 20 9	D1/005D 60032290
	<b>Round End Taper</b>		856 22 9	D6/005D 60032294
	<b>Round End Taper</b>		856 24 9	D1/005D 60032298
	<b>Round End Taper</b>		856 26 9	D1/005D 60032296
	<b>Round End Taper</b>		856 28 9	D6/005D 60032300
	<b>Round End Taper</b>		856 30 9	D1/005D 60032304
	<b>Round End Taper</b>		856 32 9	D6/005D 60032302
	<b>Round End Taper</b>		856 34 9	D6/005D 60032306
	<b>Round End Taper</b>		856 36 9	D1/005D 60032310
	<b>Round End Taper</b>		856 38 9	D1/005D 60032308
	<b>Round End Taper</b>		856 40 9	D6/005D 60032318
	<b>Round End Taper</b>		856 42 9	D1/005D 60032316
	<b>Round End Taper</b>		856 44 9	D6/005D 60032314
	<b>Round End Taper</b>		856 46 9	D6/005D 60032320
	<b>Round End Taper</b>		856 48 9	D6/005D 60032322
	<b>Round End Taper</b>		856 50 9	D6/005D 60032324
	<b>Round End Taper</b>		856 52 9	D6/005D 60032328
	<b>Round End Taper</b>		856 54 9	D6/005D 60032326
	<b>Round End Taper</b>		856 56 9	D6/005D 60032330
	<b>Round End Taper</b>		856 58 9	D6/005D 60032334
	<b>Round End Taper</b>		856 60 9	D6/005D 60032338
	<b>Round End Taper</b>		856 62 9	D6/005D 60032336
	<b>Needle</b>		858 12 8	D1/005D 60032388
	<b>Needle</b>		858 14 8	D1/005D 60032386
	<b>Needle</b>		858 16 8	D1/005D 60032384
	<b>Needle</b>		858 18 8	D1/005D 60032394
	<b>Needle</b>		858 20 8	D1/005D 60032392
	<b>Needle</b>		858 22 8	D1/005D 60032390
	<b>Needle</b>		858 24 8	D1/005D 60032396
	<b>Needle</b>		858 26 8	D1/005D 60032404
	<b>Needle</b>		858 28 8	D1/005D 60032400
	<b>Needle</b>		858 30 8	D1/005D 60032398
	<b>Round End Cylinder</b>		881 12 8	D6/005D 60032698
	<b>Round End Cylinder</b>		881 14 8	D1/005D 60032602
	<b>Round End Cylinder</b>		881 16 8	D1/005D 60032600
	<b>Round End Cylinder</b>		881 18 8	D6/005D 60032604
	<b>Round End Cylinder</b>		881 20 8	D1/005D 60032608
	<b>Round End Cylinder</b>		881 22 8	D1/005D 60032606
	<b>Round End Cylinder</b>		881 24 8	D6/005D 60032610
	<b>Round End Cylinder</b>		881 26 8	D1/005D 60032614
	<b>Round End Cylinder</b>		881 28 8	D1/005D 60032612
	<b>Round End Cylinder</b>		882 12 10	D1/005D 60032626
	<b>Round End Cylinder</b>		882 14 10	D1/005D 60032628
	<b>Beveled Cylinder</b>		884 12 6	D6/005D 60032632
	<b>Beveled Cylinder</b>		885 12 8	D6/005D 60032638
	<b>Beveled Cylinder</b>		885 14 8	D6/005D 60032636
	<b>Beveled Cylinder</b>		885 16 8	D6/005D 60032640
	<b>Beveled Cylinder</b>		885 18 8	D6/005D 60032642
	<b>Beveled Cylinder</b>		886 12 10	D6/005D 60032646
	<b>Beveled Cylinder</b>		886 14 10	D6/005D 60032644
	<b>Beveled Cylinder</b>		886 16 10	D6/005D 60032650
	<b>Beveled Cylinder</b>		886 18 10	D6/005D 60032648
	<b>Beveled Cylinder</b>		886 20 10	D6/005D 60032652
	<b>Beveled Cylinder</b>		886 22 10	D6/005D 60032654
	<b>Flange</b>		889 9 3.5	D1/005D 60032660
	<b>Flange</b>		889 11 3.5	D1/005D 60032658
	<b>Flange</b>		889 13 3.5	D1/005D 60032656
	<b>Occlusal Reduction</b>		899 27 7	D4/005D 60032664
	<b>Acorn</b>		905 23 2.7	D4/005D 60032666
	<b>Rounded Edge Taper</b>		846R 16 6	D1/005D 60032122
	<b>Rounded Edge Taper</b>		847R 16 8	D6/005D 60032120
	<b>Rounded Edge Taper</b>		847R 18 8	D6/005D 60032148
	<b>Rounded Edge Taper</b>		847R 18 10	D1/005D 60032152
	<b>Rounded Edge Taper</b>		847R 20 8	D1/005D 60032150
	<b>Rounded Edge Taper</b>		847R 22 8	D6/005D 60032154
	<b>Rounded Edge Taper</b>		848R 16 10	D6/005D 60032182
	<b>Rounded Edge Taper</b>		848R 18 10	D6/005D 60032184
	<b>Round End Taper Long</b>		850L 16 12	D1/005D 60032228
	<b>Round End Taper Long</b>		850L 18 12	D1/005D 60032226
	<b>Round End Taper Long</b>		850L 20 12	D1/005D 60032230
	<b>Round End Taper Narrow</b>		850N 14 10	D6/005D 60032232
	<b>Round End Taper Long</b>		856L 12 10	D1/005D 60032340
	<b>Round End Taper Long</b>		856L 14 10	D1/005D 60032342
	<b>Round End Taper Long</b>		856L 16 10	D6/005D 60032344
	<b>Round End Taper Long</b>		856L 18 10	D1/005D 60032346
	<b>Round End Taper Long</b>		856L 20 11	D6/005D 60032352
	<b>Round End Taper Long</b>		856L 22 11	D1/005D 60032356
	<b>Round End Taper Long</b>		856L 24 11	D1/005D 60032354
	<b>Round End Taper Long</b>		856L 26 11	D6/005D 60032362
	<b>Round End Taper Long</b>		856L 28 11	D1/005D 60032366
	<b>ET4</b>		10 4.2	D2/005D 60032713
	<b>ET6</b>		14 6	D2/005D 60032715
	<b>ET9</b>		14 9	D2/005D 60032714
	<b>KS0</b>		10 7	D2/005D 60032698
	<b>KS1</b>		12 7	D2/005D 60032690
	<b>KS2</b>		14 8	D2/005D 60032716
	<b>KS4</b>		24 4.2	D2/005D 60032718
	<b>KS5</b>		31 6.2	D2/005D 60032719
	<b>KS6</b>		25 9	D2/005D 60032720
	<b>KS7</b>		54 1	D2/005D 60032721
	<b>Egg/Football</b>		379T 5	D2/005D 60032722
	<b>Occlusal Reduction/Barrel</b>		811T 33 5	D3/005D 60031812
	<b>Flat End Cylinder</b>		836T 14 6	D3/005D 60031946
	<b>Flat End Cylinder</b>		836T 16 6	D3/005D 60032046
	<b>Round End Taper</b>		850Z 18 10	D5/005D 60032444
	<b>Round End Taper</b>		856Z 18 8	D5/005D 60032380
	<b>Flame</b>		862Z 14 8	D5/005D 60032468
	<b>Flame</b>		863Z 14 10	D5/005D 60032482
	<b>Round End Cylinder</b>		881Z 14 8	D5/005D 60032620
	<b>Round End Cylinder</b>		881Z 16 8	D5/005D 60032623

# MEET THE TEAM



**Laura Whyte**  
07788 146 109  
laura.whyte@coltene.com  
Scotland



**Debi Boynton**  
07764 327 425  
debi.boynton@coltene.com  
North West



**Emily Downie**  
07889 227 424  
emily.downie@coltene.com  
North East



**Nick O'Keeffe**  
00353 8641 35766  
nicholas.okeeffe@coltene.com  
Ireland



**Emma Gilks**  
07906 749 682  
emma.gilks@coltene.com  
West Midlands & North Wales



**Sue Robins**  
07786 965 019  
sue.robins@coltene.com  
East Midlands



**Andrew Miller**  
07788 583 057  
andrew.miller@coltene.com  
South Wales & West Country



**Eva Fedorowicz**  
07818 424 210  
eva.fedorowicz@coltene.com  
North, East, West  
& Central London



**Louise Fish**  
07788 146 130  
louise.fish@coltene.com  
Essex, South London  
& South Coast

## UK OFFICE - SUSSEX



**Nic Coomber**  
01444 235 486 - Ext 204  
National Account Manager  
& Marketing Strategist



**Helen Chart**  
01444 235 486 - Ext 202  
Finance & Office Manager

\*Offer ends 31.03.2025. Available from participating suppliers. RRP's may vary with supplier.  
For free item offers, free item from supplier unless otherwise stated.

© COLTENE – Printing errors, mistakes and changes reserved.



0800 254 5115 | [info.uk@coltene.com](mailto:info.uk@coltene.com) | [www.coltene.com](http://www.coltene.com)

Coltene/Whaledent Ltd., The President Suite A, Kendal House, Victoria Way, Burgess Hill, West Sussex RH15 9NF

