

**3M** Science.  
Applied to Life.™

# STEP-BY-STEP



**3M™ RelyX™ Universal**  
Resin Cement



# System Components

## 3M™ Scotchbond™ Universal Plus Adhesive



- Self-etch, selective-etch and total-etch adhesive
- MDP primer for zirconia and metal
- Silane primer for glass ceramics, composites, fiber reinforced posts

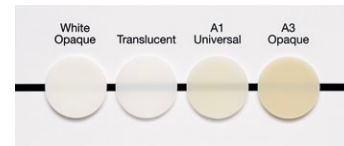
## 3M™ RelyX™ Universal Resin Cement



3M™ RelyX™ Universal Micro Mixing Tips with Elongation Tips



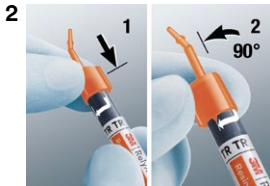
## Shade selection



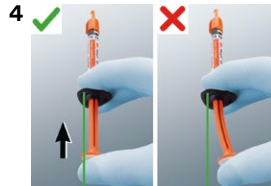
### Self-sealing automix syringe



To ensure proper function, the valve must be kept in correct closed starting position.



Full rotation until stop.



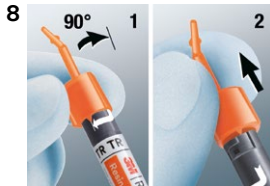
Apply moderate centric force without bending the plunger.



Do not pull back the plunger of the syringe. This might clog the syringe permanently.



Discard a small amount of cement.



Store syringe without mixing tip.

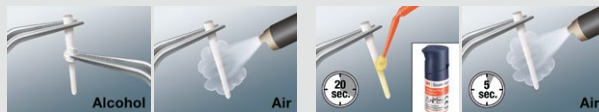


Don't insert any instrument to rotate or disassemble the valve. Don't rotate the valve during cleaning.

# Restoration Pre-Treatment Overview

## Fiber-reinforced Composite Post

Priming with adhesive not required for 3M™ RelyX™ Fiber Posts



## Zirconia, Alumina, Metal

Priming with adhesive optional, recommended for veneer, table top, adhesive bridge

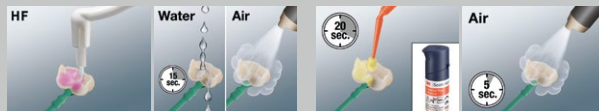


## Composite/Hybrids



## Glass-Ceramic

Alternative primer: Apply a Silane, e.g. 3M™ RelyX™ Ceramic Primer



See section

# 1

Follow the instructions for use of the restoration material for specific instructions.

## Option 1

Self-adhesive. Recommended for:

- Post
- Crown
- Bridge



Adhesive on tooth not required.

See section

# 2a/2b

## Option 2

(Selective-etch) adhesive. Recommended for:

- Inlay
- Onlay



Optional for cut enamel.

See section

# 2c

## Option 3

Total-etch adhesive. To be used for:

- Table Top
- Veneer
- Adhesive Bridge



See section

# 2d

# 1

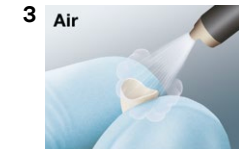
## Restoration Pre-Treatment Recommendation

# STEP-B

### Fiber-reinforced Composite Post



### Zirconia, Alumina, Metal



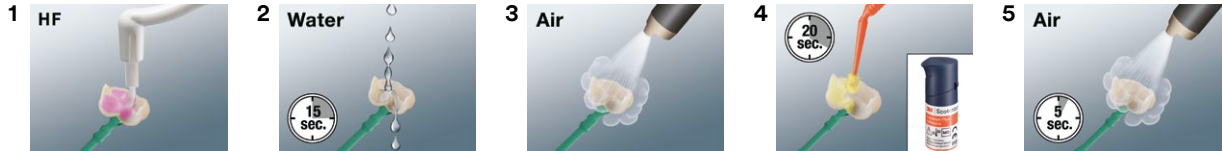
# Y-STEP

3M™ RelyX™ Universal Resin Cement

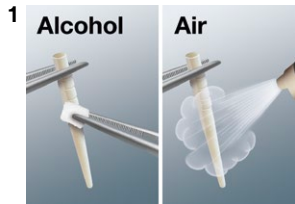
## Composite/ Hybrids



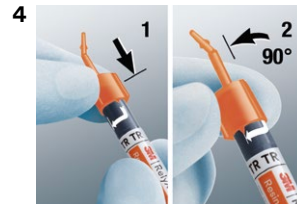
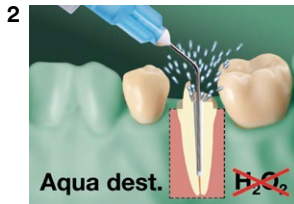
## Glass-Ceramic



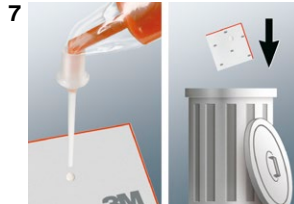
Follow the instructions for use of the restoration material for specific instructions.



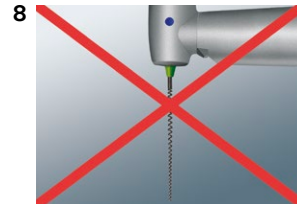
3M™ RelyX™ Fiber Posts only. For pre-treatment of other posts see section 1.



To unlock syringe fully rotate mixer until stop.



Do not use high pressure. Check mixer position (image 5) if extrusion force is high.

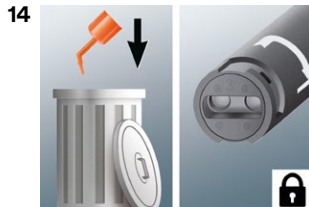
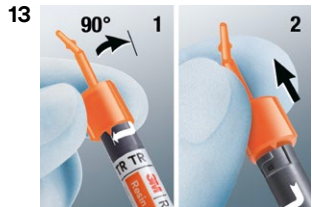
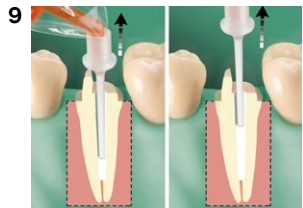


No lentulo!



# Y-STEP

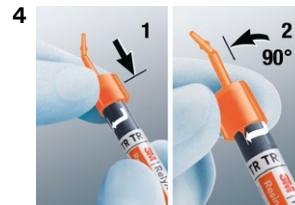
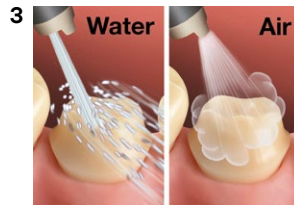
3M™ RelyX™ Universal Resin Cement



# 2b Self-Adhesive Cementation

# STEP-B

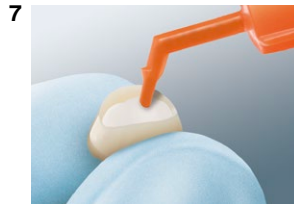
1  
Pre-treat  
restoration  
according to  
**section 1**



To unlock syringe fully rotate  
mixer until stop.

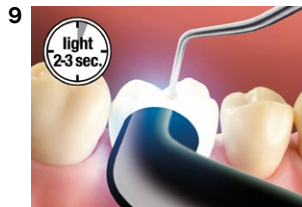


Do not use high pressure.  
Check mixer position (image 5)  
if extrusion force is high.

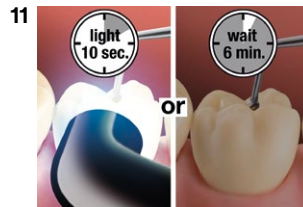


# Y-STEP

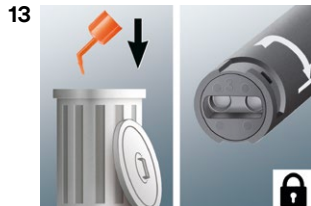
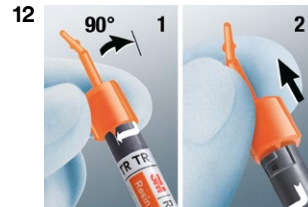
## 3M™ RelyX™ Universal Resin Cement



Tack cure approx. 2-3 sec per surface (>1200 mW/cm<sup>2</sup>).



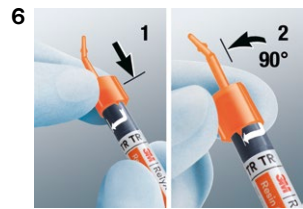
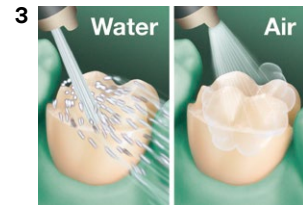
Light cure 10 sec per surface (>1200 mW/cm<sup>2</sup>) or wait 6 minutes.



1  
Pre-treat  
restoration  
according to  
**section 1**



Selective-etch of uncut enamel.  
Optional for cut enamel.



To unlock syringe fully rotate mixer  
until stop.



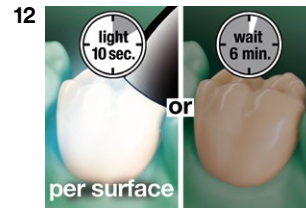
Do not use high pressure.  
Check mixer position (image 7)  
if extrusion force is high.

# Y-STEP

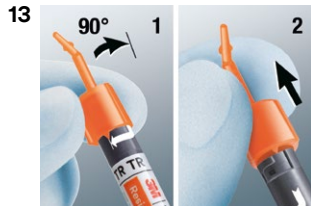
## 3M™ RelyX™ Universal Resin Cement



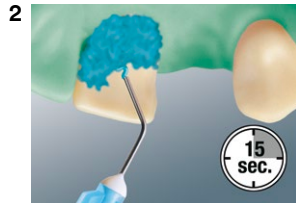
Tack cure approx. 2-3 sec per surface (>1200 mW/cm<sup>2</sup>).



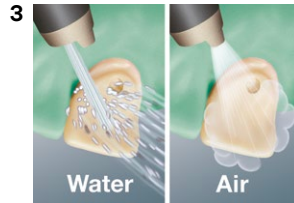
Light cure 10 sec per surface (>1200 mW/cm<sup>2</sup>) or wait 6 minutes.



1  
Pre-treat  
restoration  
according to  
**section 1**



Total-etch.



To unlock syringe fully rotate  
mixer until stop.



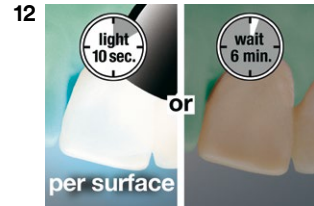
Do not use high pressure.  
Check mixer position (image 7)  
if extrusion force is high.

# Y-STEP

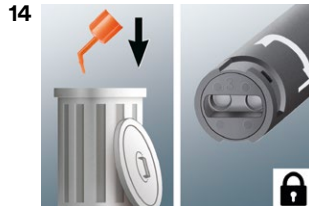
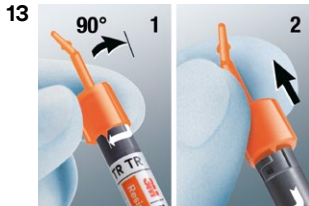
## 3M™ RelyX™ Universal Resin Cement



Tack cure approx. 2-3 sec per surface (>1200 mW/cm<sup>2</sup>).



Light cure 10 sec per surface (>1200 mW/cm<sup>2</sup>) or wait 6 minutes.



Please refer to product instructions for use for complete information.



**3M Deutschland GmbH**  
Health Care Business  
Carl-Schurz-Str. 1  
41453 Neuss - Germany

3M, RelyX and Scotchbond are trademarks of 3M or 3M Deutschland GmbH.  
Used under license in Canada. © 2021, 3M. All rights reserved.

3M, RelyX et Scotchbond sont des marques de commerce de 3M ou 3M Deutschland GmbH.  
Utilisées sous licence au Canada. © 2021, 3M. Tous droits réservés.



**0123**

3100022026/02