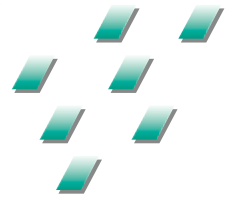


Restorations that cross generations



EQUIA Forte[®] HT
Bulk fill glass hybrid
restorative system



Since 1921
100 years of Quality in Dental

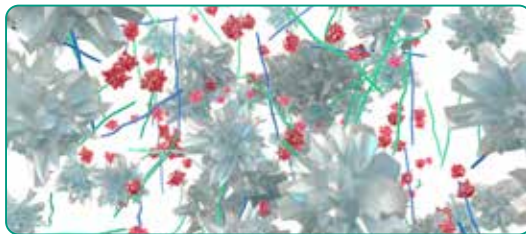
Restorations for all generations

Building on the success of EQUIA Forte, the new EQUIA Forte HT is a long-term bulk fill restorative system with enhanced mechanical properties, sound marginal seal and excellent handling. This makes EQUIA Forte HT a versatile and durable restorative solution, ideal for patients of all ages, including pediatric, geriatric and high caries risk patients.

Glass hybrid technology

EQUIA was first launched in 2007, and numerous clinical studies have demonstrated its clinical efficacy in Class I and II restorations* ever since. In 2014, GC's new glass hybrid technology caused further considerable improvements, leading to the development of EQUIA Forte. This restorative system combined a self-cure, bulk fill restorative, EQUIA Forte Fil, laminated with a nano-filled, self-adhesive resin coat, EQUIA Forte Coat. The new glass hybrid innovation was achieved through introduction of ultra-fine highly reactive glass and high-molecular weight polyacrylic acid powders within conventional glass which ensures advanced mechanical properties with improved flow and non-sticky handling. The nano-filled, self-adhesive resin, EQUIA Forte Coat, ensures optimized marginal seal and wear resistance.

- Surface-treated FAS (Fluoro Aluminio Silicate) glass
- Highly reactive surface-treated fine FAS glass
- High-molecular-weight polyacrylic acid
- Polyacrylic acid



EQUIA Forte Fil and EQUIA Forte HT Fil
advanced glass hybrid technology



EQUIA Fil

Taking glass hybrid to the next level

The strength and handling are further improved in EQUIA Forte HT by developing an intelligent control of distribution and interaction of these glass particles. Also, EQUIA Forte Coat is now available in an ergonomic flip-top bottle that minimizes waste.

The result? A strong restorative with prolonged working time and superb handling that is excellent for bulk-fill placement, even in loadbearing Class II restorations.*

*See technique guide for suggested cavity preparations.



Improved translucency

Pushing the glass hybrid technology even further, **EQUIA Forte HT** now has a perfectly **adapted translucency** for better looking posterior restorations. The **refractive index** of the fillers has been adapted to the one of the matrix. As a result, the final restorations will look **more natural and aesthetic**⁷.



EQUIA Forte HT Fil
Shade A2



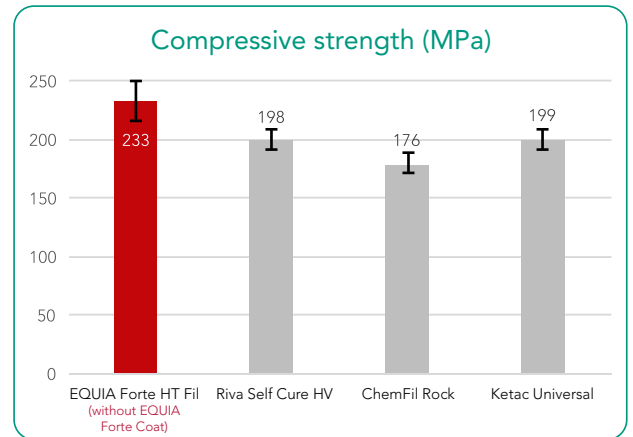
EQUIA Forte Fil
Shade A2

Strong & durable

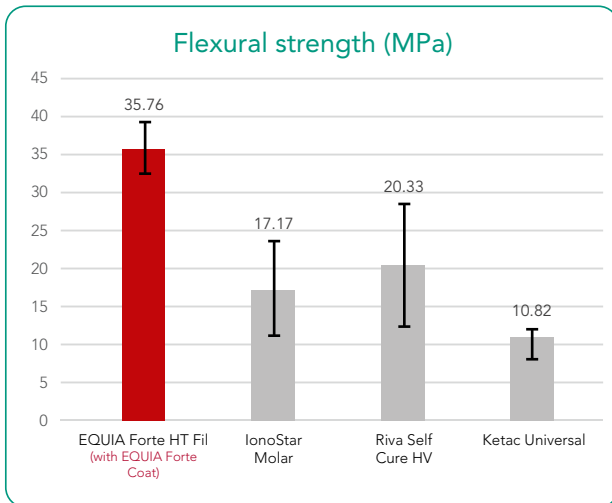
Glass hybrid systems offer the strength of the latest innovative glasses combined with the wear resistance of a filled coating. The **unique synergy between the coating and the restorative material** improves the durability and wear resistance of the restorations⁴.



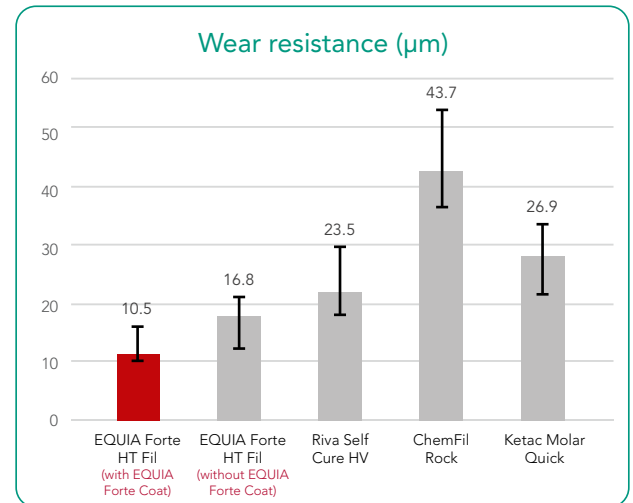
Recommended Class II cavity size as per the IFU of EQUIA Forte HT. The cavity should be prepared with up to 1-1.5 mm distance from cuspal peaks.



ISO9917-1: 2007.
Source: GC R&D, Japan, 2018. Data on file.



Three-point bending test (ISO10477:2004).
Source: University of Siena, Italy. Publication in preparation.



Source: GC R&D, Japan, 2018. Data on file.

Excellent biocompatibility & biomimetic properties

EQUIA Forte HT exhibits a strong chemical bond to tooth providing exceptional marginal seal. The isolation is not needed as the bond strength is not compromised even in presence of saliva. Since no etchant is used, there is virtually no post-operative sensitivity. Due to its hydrophilic nature and coefficient of thermal expansion similar to dentine, it is an excellent biomimetic material i.e. creating a 3D structure which mimics the structure of the dental tissue. It is not only a tooth-friendly option but also an environment-friendly solution, making it a great choice for multiple clinical situations including as an amalgam alternative.



True bulk-fill



Moisture-tolerant



Extensive indications



Proven longevity

Fast & easy placement

EQUIA Forte HT can be used in the partial caries excavation technique to create **minimally invasive preparations (MI)**. As no etching is used and the system relies on chemical adhesion, there is less risk of post-operative sensitivity – which also makes it a **safe treatment solution**.



Place

True bulk-fill technique
Convenient capsule delivery

Shape

Prolonged working time
Easy to contour
Non -sticky

Finish

Set after 2'30"

Coat

Glossy surface without polishing with increased wear resistance and exceptional marginal seal

Light-cure

Finished in just 3'25"

EQUIA Forte HT, your best partner for posterior restorations.



Courtesy of Dr. Z Bilge Kütük, Turkey



Main indications for EQUIA Forte HT

Long-term proven performance

EQUIA Forte HT is a reliable system based on **12 years of clinical experience with EQUIA**.

The longevity of posterior EQUIA restorations has been proven in many independent, long-term clinical studies¹⁻⁵ showing after 6 years a success rate of 100% for Class I restorations²⁻³ and between 92.3% and 98.7% for Class II^{1-3,9}.

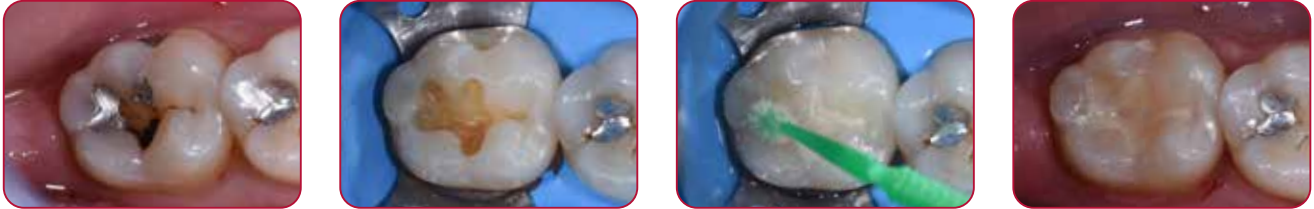
- Gurgan *et al.* A randomized controlled 10 years follow-up of a glass ionomer restorative material in class I and class II cavities. J Dent. 2020 Mar;94:103175. doi: 10.1016/j.jdent.2019.07.013.
EQUIA vs. composite
- Gurgan *et al.* Clinical performance of a glass ionomer restorative system: a 6-year evaluation. Clin Oral Investig. 2017;21(7):2335-2343.
EQUIA vs. composite
- Türkün *et al.* A Prospective Six-Year Clinical Study Evaluating Reinforced Glass Ionomer Cements with Resin Coating on Posterior Teeth: Quo Vadis? Oper Dent. 2016;41(6):587-598.
EQUIA vs. Riva Self Cure
- Basso *et al.* 7 Years, Multicentre, Clinical Evaluation on 154 Permanent Restorations Made With a Glassionomer-based Restorative System. J Dent Res. 2016;95 Spec Issue B: #0446.
- Klinke T. *et al.* Clinical performance during 48 months of two current glass ionomer restorative systems with coatings: a randomized clinical trial in the field. Trials. 2016;17(1):239. doi: 10.1186/s13063-016-1339-8.
EQUIA vs. glass ionomer with conventional coating
- Gurgan *et al.* 12-month Clinical-performance of a Glass-hybrid-restorative in Non-caries-cervical-lesions of Patients With Bruxism J Dent Res. 2018;97 Spec Issue A: #0235.
EQUIA Forte vs. composite
- Shimada *et al.* Evaluation of Mechanical Properties of New GI-restorative (EQUIA Forte® HT). J Dent Res. 2019; 98 Spec Issue A: #3662.
EQUIA Forte HT
- Y. Hokii *et al.* Fluoride Ion Release/Recharge Behavior of Ion-Releasing Restorative Materials, Dental Materials, Volume 35, Supplement 1, 2019 (Accepted for publication).
- Literature review, presented at IADR 2019 by Prof Soraya Coelho Leal.
- Miletic *et al.* Clinical Performance of a Glass-Hybrid System Compared with a Resin Composite in the Posterior Region: Results of a 2-year Multicenter Study. J Adhes Dent. 2020;22(3):235-247. doi: 10.3290/j.jad.a44547.
EQUIA Forte vs. Composite

Clinical cases

A strong & biomimetic amalgam alternative

The material can be placed in bulk and is easy to pack & contour. It takes only 3'25" to complete your restorations!*

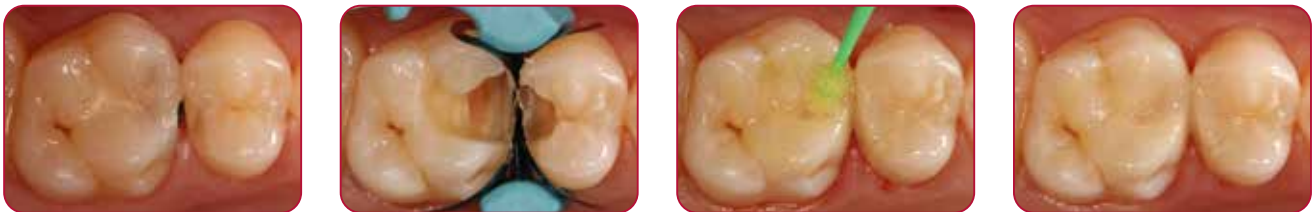
*Assuming average procedure times following the instructions for use.



Courtesy of Dr. Victor Cedillo Felix, San Diego, CA.

Restoration of a posterior tooth in a high caries risk patient

The moisture tolerance of EQUIA Forte HT enables easy restoration of deep cavities, even when a rubber dam cannot be placed. The use of sectional matrix will contribute to the longevity of the restorations.



Courtesy of Dr. Z Bilge Kütük, Turkey

Restoration of sensitive, hypomineralised MIH teeth

The chemical adhesion of the material – even to untreated dentine - offers a more sustainable solution in situations where bonding is compromised. The material can be easily placed after partial manual caries removal, making it easier to use in hypersensitive patients or patients having molar incisor hypomineralisation (MIH).



Courtesy of Dr. P. Rouas, France

EQUIA Forte HT Intro Pack

Contains: 20 capsules + 20 unit doses of EQUIA Forte Coat (0.1mL)

10004846 A2 10004796 A3 10004950 B2

EQUIA Forte HT Fil Refill

Contains: 50 capsules

10004873 A1 10004841 A2 10004901 A3 10004872 A3.5
10004878 B1 10004856 B2 10004864 B3 10004794 C4

EQUIA Forte HT Promo Pack

Contains: 100 capsules + 1 bottle of EQUIA Forte Coat (4mL)

10004866 A2 10004848 A2-A3 10004811 A3 10004847 A3-B2

EQUIA Forte HT Clinic Pack

Contains: 200 capsules + 1 bottle of EQUIA Forte Coat (4mL)

10004863 A2 10004892 A3 10004874 B2

10004855 EQUIA Forte HT Assorted pack

Contains: 50 capsules: 10 capsules of each shade

A2, A3, A3.5, B1, B3

10004885 EQUIA Forte Coat Bottle Refill

Contains: One EQUIA Forte Coat bottle (4mL)

10003513 EQUIA Forte Coat Unit Dose Refill

Contains: 50 unit doses of EQUIA Forte Coat (0.1mL)

EQUIA and EQUIA Forte HT are trademarks of GC. ChemFil Rock, Ketac Molar Quick, Ketac Universal and Riva Self Cure HV are not trademarks of GC.

GC EUROPE N.V.

Head Office
Researchpark
Haasrode-Leuven 1240
Interleuvenlaan 33
B-3001 Leuven
Tel. +32.16.74.10.00
Fax. +32.16.40.48.32
info.gce@gc.dental
<https://europe.gc.dental>

GC UNITED KINGDOM Ltd.

Coopers Court Newport Pagnell
Buckinghamshire
MK16 8JS
United Kingdom
Tel. +44.1908.218.999
Fax. +44.1908.218.900
info.uk@gc.dental
<https://europe.gc.dental/en-GB>

