

SDI | **RIVA SILVER**

SILVER-ALLOY REINFORCED GLASS
IONOMER RESTORATIVE MATERIAL



MERCURY FREE FLUORIDE RELEASING SILVER RESTORATIVE

When you need a tough and strong core build up material or occlusal restoration, Riva Silver is your answer. Riva Silver is an excellent core build up material and at the same time, it is a great restorative. Riva Silver is the ideal restorative in situations where patient compliance and moisture control are difficult. Riva Silver is extremely easy and quick to use. When all else fails, Riva Silver could be your solution.

Riva Silver utilises SDI's proprietary *ionglass™* filler developed by our glass technologists. *ionglass™* is a radiopaque, high ion releasing, reactive glass used in SDI's range of dental cements. Riva Silver releases substantially higher fluoride to assist with remineralisation of the natural dentition.



1
LIGHT GREY
COLOUR

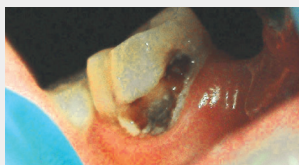


COMPRESSIVE STRENGTH

134 MPa
@ 1 HOUR

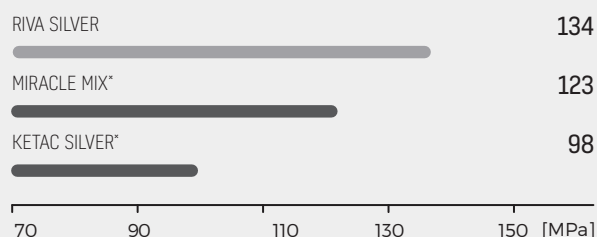
HIGH EARLY STRENGTH

Riva Silver's high compressive strength minimises the risk of fracture in the critical early stages after the restoration has been placed.



Photos courtesy of Dr. Philip Casan, Victoria, Australia

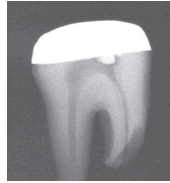
COMPRESSIVE STRENGTH AT 1 HOUR [2]



HIGH RADIOPACITY

HIGH RADIOPACITY

The addition of metal particles into the cement substantially increases radiopacity. Riva Silver is easily differentiated on radiographs from that of tooth structure allowing easy diagnosis of early lesions.

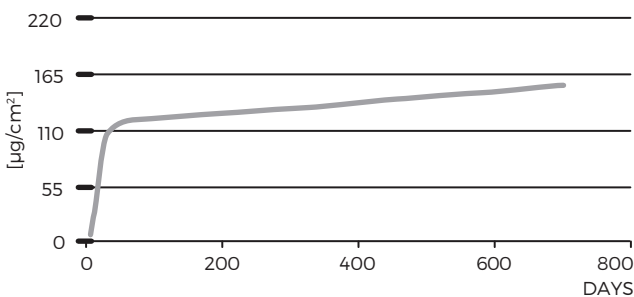


HIGH FLUORIDE RELEASE

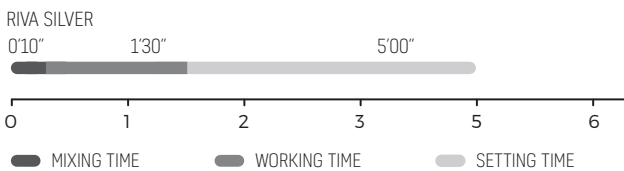
Riva Silver's free movement of fluoride provides benefits to surrounding and adjacent tooth surfaces. Fluoride is held within the glass matrix without being bound by the structure. If the level outside the matrix is lower, then fluoride ions are released.

Conversely, if the fluoride level is higher (eg. from topical fluoride) then fluoride will recharge the glass ionomer matrix. Riva Silver has the ability to be recharged with fluoride from external sources, providing long term protection against recurrent carries. Riva Silver is great for treating high caries-risk patients as part of an overall treatment plan for maximum care.

CUMULATIVE FLUORIDE RELEASE [1]



SETTING TIMES



EASY HANDLING

Riva Silver's condensable nature allows the operator to quickly and easily place the restoration. Riva Silver can be packed using an amalgam condenser.

PERFECT FOR NON-COMPLIANT PATIENTS

Riva Silver is the ideal restorative in situations where patient compliance and moisture control are difficult. Riva Silver is extremely easy and quick to use.

ADVANTAGES

- Chemically adheres to tooth structure
- Silver reinforced
- Very high radiopacity
- Easy handling
- No shrinkage
- Great for core build ups
- High early strength - perfect for children and challenging patients
- High fluoride releasing and recharging ability
- High wear resistance
- Bioactive proprietary *ionglass™* technology - high ion exchange
- Light grey shade - minimal masking required

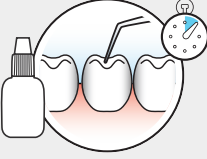
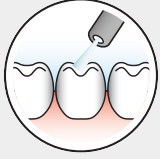
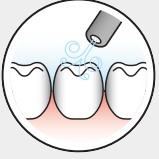
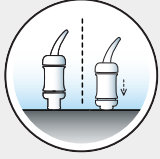
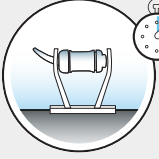
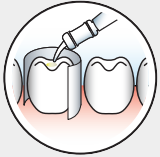
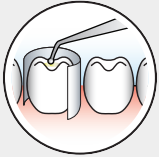
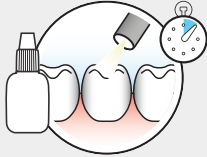

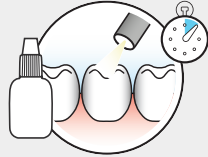
INDICATIONS

- Small class I and II restorations
- Deciduous teeth restorations
- Geriatric restorations
- Intermediate restoratives and base material for class I and II cavities using the sandwich technique
- Class V restorations in non-aesthetic situations
- Core buildups
- Temporary fillings
- Restorations where radiopacity is desirable
- Restorative in the field using the ART technique
- Temporary endodontic fillings

GREAT FOR CORE BUILDUPS

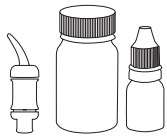
Riva Silver is an excellent material for core buildups. Its high early compressive and bond strength properties ensure favourable core buildup conditions.

INSTRUCTIONS FOR CAPSULES[^]

- 1 Isolate tooth, prepare cavity. Apply Riva Conditioner for 10 seconds. 
- 2 Wash thoroughly. 
- 3 Remove excess water. Keep moist. 
- 4 Activate the capsule and immediately mix in a triturator OR mix the powder/liquid combination on a mixing pad. Do not click before you mix.
 Press capsule down to click. Ten seconds in a triturator.  
- 5 Apply Riva Silver to tooth surface. 
- 6 Form a contour and cover with a matrix if required. 
- 7 Apply Riva Coat and light cure for 10 seconds. 
- 8 Final finishing under water spray using standard techniques can begin approximately 6 minutes after start of mixing. 
- 9 Apply Riva Coat and light cure for 10 seconds. 

[^] For powder and liquid instructions, please refer to Instructions for Use

ORDER DETAILS



CAPSULES, POWDER AND LIQUID

Riva Silver Capsules 50 x Riva Silver Capsules	8670008
Riva Silver Powder/Liquid Kit 0g (8.9ml) Riva Silver Liquid 32g Riva Silver Powder Accessories	8670508
Riva Silver Powder Refill 32g Riva Silver Powder	8670108
Riva Silver Liquid Refill 10g (8.9ml) Riva Silver Liquid	8670900



APPLICATORS

Riva Applicator	5545009
Riva Applicator 2	5545013
Riva Applicator 2 Black	5545023



ACCESSORIES

Riva Coat 5mL bottle refill	8610001
Riva Conditioner 10mL bottle refill	8620001



* Miracle Mix and Ketac Silver are not the registered trademarks of SDI Limited.

** Published and SDI Test Data.

[1] McCabe JF, Al-Naimi OT. Fluoride release of three Riva GI Products Compared with that of a competitor product. University of Newcastle (UK); August 2006.

[2] Al-Naimi, O.T., McCabe, J.F., Comparing the Compressive Strength of Riva Silver GIC with that of other Competitor Products, January 2005, University of Newcastle (UK).



YOUR SMILE. OUR VISION.



MADE IN AUSTRALIA
by SDI Limited
Bayswater, Victoria 3153
Australia 1800 337 003
www.sdi.com.au

AUSTRIA 00800 0225 5734
BRAZIL 0800 770 1735
FRANCE 00800 0225 5734
GERMANY 0800 100 5759
ITALY 00800 0225 5734

NEW ZEALAND 0800 734 034
SPAIN 00800 0225 5734
UNITED KINGDOM 00800 0225 5734
USA & CANADA 1 800 228 5166